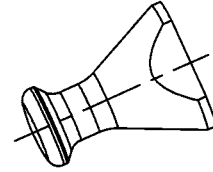
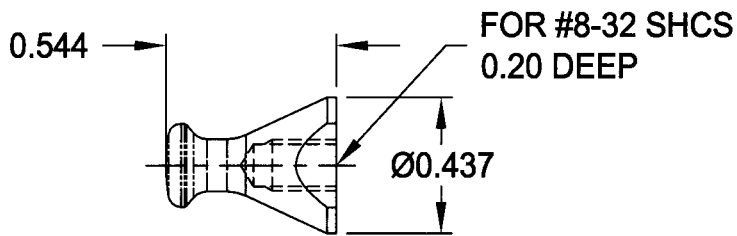


# MICRO LOCK KNOBS

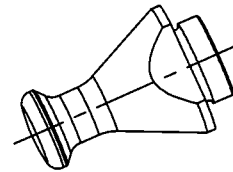
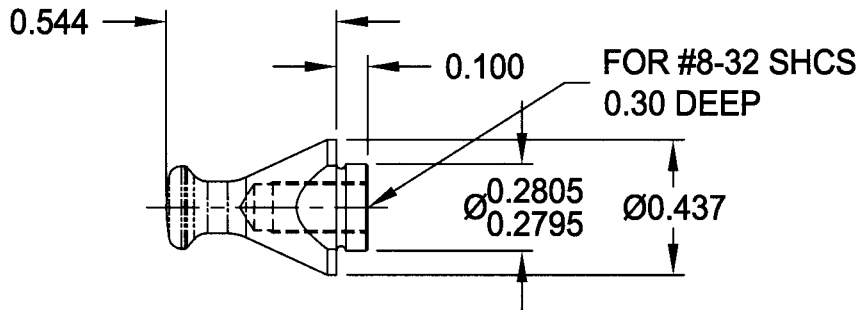
## SELF ALIGNMENT

CAT. # PD250SA



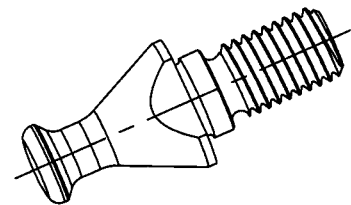
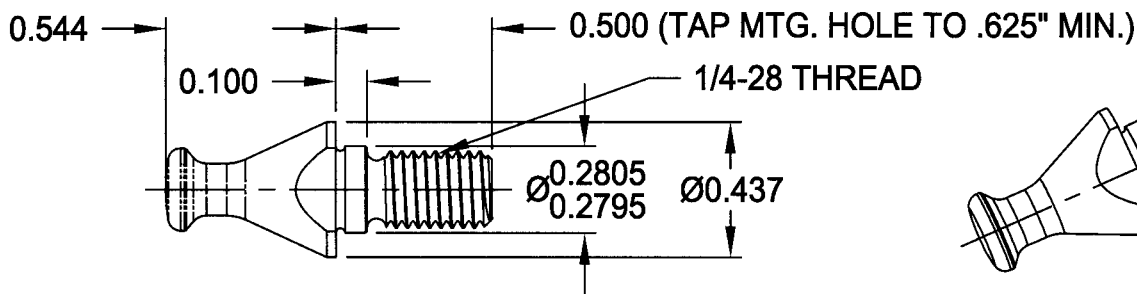
## TAPPED

CAT. # PD250T

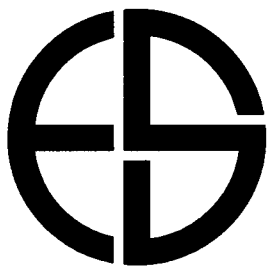


## PILOTED W/ 1/4-28 STUD

CAT. # PD250STD4



NOTE: MAXIMUM INSTALLATION TORQUE SPEC: 60 IN./LBS.  
USING LOC-TITE IS RECOMMENDED



## EDWARD D. SEGEN & CO, LLC

100 Enterprise Drive, Ft. Loramie, OH 45845

PH. 937.295.2281 FAX 937.295.3677

[www.toolingtechgroup.com](http://www.toolingtechgroup.com)

THE INFORMATION CONTAINED HEREIN MAY BE THE SUBJECT OF PENDING OR CONTEMPLATED PATENTS,  
AND IS FURNISHED WITHOUT PREJUDICE TO THE PATENT RIGHTS OF EDWARD D. SEGEN & CO, LLC.